

RIBA J

# PIP

Products in Practice Jul/Aug 2020



**Extreme spec**  
Waving wall,  
Boutique, New Delhi  
09

**Roofing**  
Audemars Piguet  
Museum, Switzerland  
10

**Special report**  
How to spend wisely  
on leisure centres  
18

**Kitchens & bathrooms**  
Three modern  
kitchens  
20

**Interiors**  
Canopy House,  
Nairobi, Kenya  
30

# Compendium



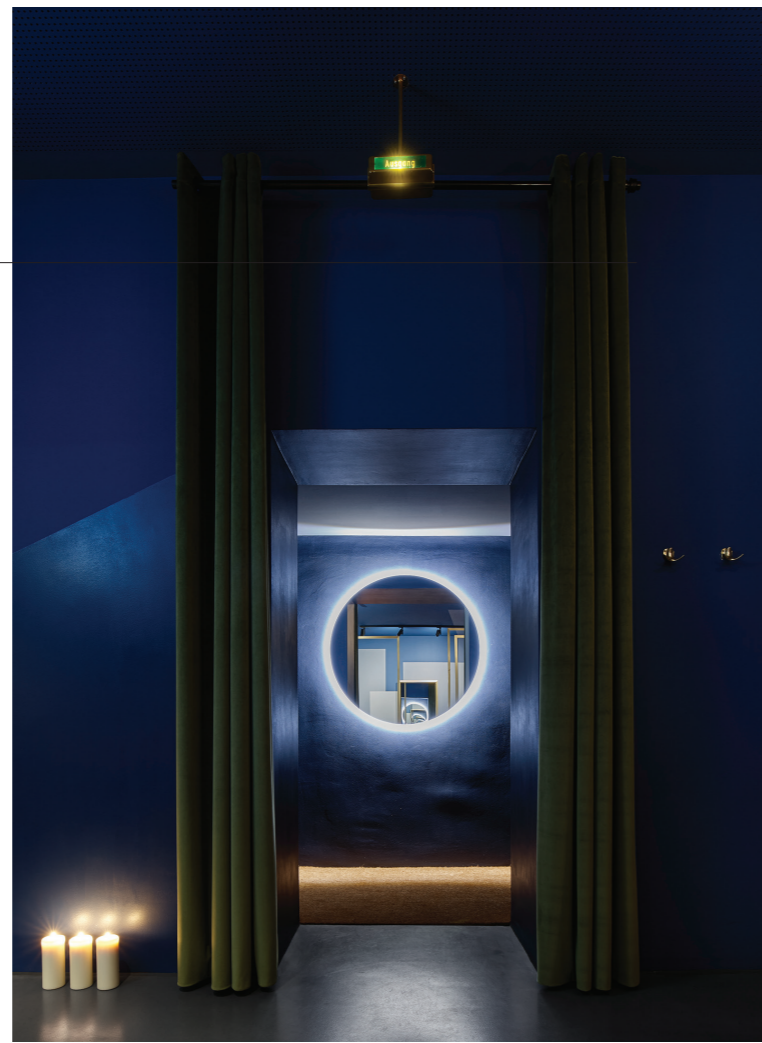
## Sett in stone

Painted in bold red, the 19th century neoclassicism of Copenhagen's former Russian Trading Company actually masked a proto-industrial concrete structure – something that must have come in handy when it recently suffered extensive fire damage. Danish brand design agency MENU teamed up with NORM Architects to create The Audo- a novel blend of company HQ and showroom for its product design, restaurant and a 10-suite hotel in the roof. Keen on minimalism, the architect chose Unidrain slot drains for the bathrooms, to allow eyes to concentrate on the industrial tiles.

## The moody blues

Young Stuttgart-based practice SOMAA has just completed a dark, colour-drenched restaurant and bar in Munich named, not surprisingly, Blau. The look is distinctly post-modern but the architect says it was influenced as much by the sublime, brooding 19th century landscapes of Caspar David Friedrich 'that speak of the existent yet intangible' as by any architectural style. Here, natural materials of rich brass, black-green marble, tan leather seating and deep green velvet curtains work to help with the ultra-violet backdrop help create a compellingly moody interior, alleviated only by the mirrored and gold surfaces around the bar and many candles that lick away at the dark. An almost Wagnerian stage-set- with a jazz influence.

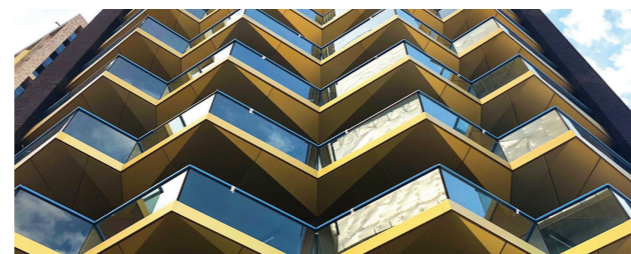
ZOEY BRAUN PHOTOGRAPHY/SOMAA



PHOTOGRAPHY UK

## Bowled over

The name 'Ceramique Internationale' might conjure up Continental associations – certainly not Leeds' Lower Wortley Ring Road – but that's where the Yorkshire-based tile company has been trading from since 1974. But that may have put it in good stead for the recent £45m Emerald Headingley stadium redevelopment. Interior designers Nanu Soda and Space Invader Design worked on the project and had the firm supply nearly 800m<sup>2</sup> of tiling, including the Technicolour Tile range for use in the Taverners Bar and directors suite – all laid in a striking beige and blue herringbone pattern.



## Gold plated

There's something slightly Ken Adam-like about the stark, golden, geometric balconies of GRID Architects' and Maccreeor Lavington's The Residence in London's Nine Elms, a handy stone's throw from the American Embassy. Origami seems the inspiration for the balconies' anodised gold fascia panels and aluminium soffits, which give it its striking 3D quality. Architectural fabricator Metalline was taken on by facade engineer Wintech and used routed and pressed folding techniques to produce over 160 unique forms for the facade to bring an additional bling factor to Allies and Morrison's masterplan for the area.

## March chair

Sir Kenneth Grange; he of the Intercity 125, the black cab and Anglepoise lamp, remains active, even at the age of 90. While teaching at the RCA he met young designer Jack Smith, now one half of Smith Matthias. When asked by Modus to reappraise his 2015 March chair, Grange looked to inject his design with more youth – hence the new March Lite chair. Smith simplified the proposition so it's now a 2D rather than 3D ply backrest, obviating the need for a bending process that brings the solid ash chair into a lower price bracket- and makes it stackable. The lacquer finish is also water based, fitting in with Smith Matthias' sustainability ethos as a designer and ensuring it can naturally return to the earth from which it grew.



BRODIE NEILL

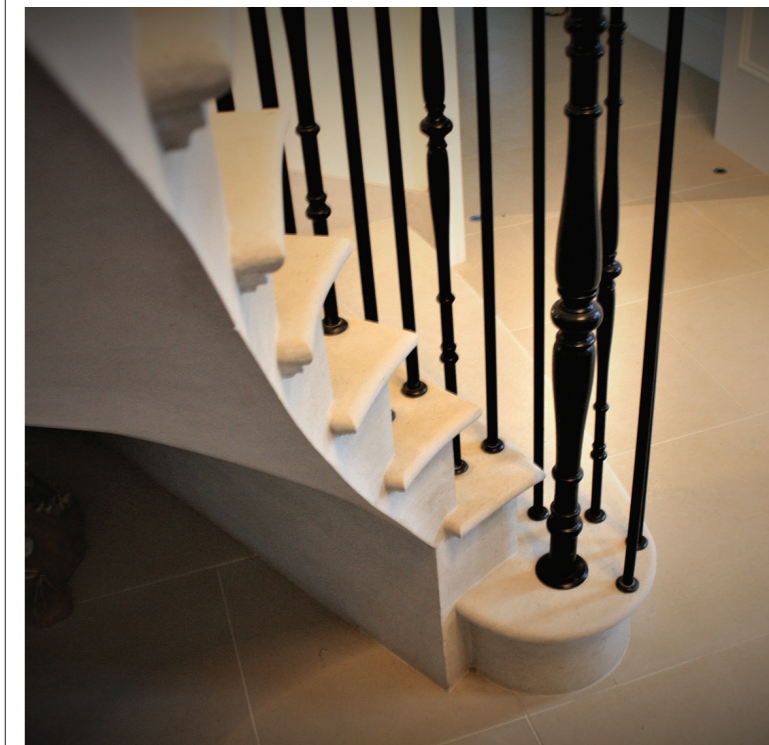


## Lockdown supernova

Since March lockdown, those of us who were lucky enough not to have to home work at the same table as your home-schooled kids, might still have had found themselves perched alongside some piece of furniture wholly unsuited to the purpose. It's a quotidian work/life conundrum that's got even the most bespoke designers thinking, not least Made in Ratio's Brodie Neill, who has created a 'home office' of sorts by combining his Alpha Chair with his Supernova side table. You may have to come off furlough to afford the ensemble, but the Supernova's 'self-levelling' apparently; handy when everyone's losing their head.

## Black is the new black

Given our new-found obsession with personal hygiene in the wake of the Covid-19 pandemic, the wash hand basin is now the focus of our daily engagement with the wider world. And in line with the latest interior trends, designers are getting more adventurous with their colours. High end sanitaryware supplier Burlington has picked up the baton and has launched its Jet collection, bringing a dark richness to what's usually a white room. Pictured is the company's 1200mm Edwardian basin and chrome washstand – a future reflection of the bygone era.



## Stairway to Tregavethan

ADAM Architecture has been busy down in Cornwall, working on the design of the new build Tregavethan Manor near Truro, taking its cue from local vernacular form, scale and detailing and using granite and rubble stone walls. Meanwhile, its on-site renewables are making it, so its website states, one of the most energy efficient dwellings in Europe' – for its size, one presumes. Internally, the firm has created a statement solid stone staircase that flows up through the building with the help of aptly-named stonemason Ian Knapper. The resulting 38-tread Portland limestone staircase took 650 man-hours to build, five months to manufacture and used nearly 12 tonnes of stone.